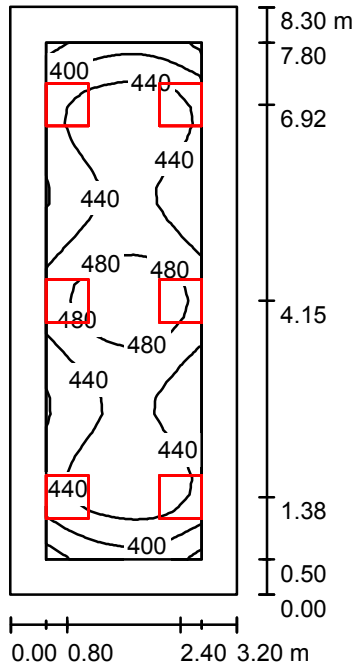


Operator
Telephone
Fax
e-Mail

2.04 / Summary



Height of Room: 3.100 m, Mounting Height: 3.100 m, Maintenance factor: 0.90

Values in Lux, Scale 1:107

Surface	ρ [%]	E_{av} [lx]	E_{min} [lx]	E_{max} [lx]	u_0
Workplane	/	443	345	510	0.779
Floor	20	334	219	406	0.656
Ceiling	70	103	82	138	0.789
Walls (4)	50	236	88	552	/

Workplane:

Height: 0.800 m
Grid: 32 x 16 Points
Boundary Zone: 0.500 m

Illuminance Quotient (according to LG7): Walls / Working Plane: 0.573, Ceiling / Working Plane: 0.234.
Proportion of points with less than 400 lx (for IEQ-7): 9.38%.

Luminaire Parts List

No.	Pieces	Designation (Correction Factor)	Φ (Luminaire) [lm]	Φ (Lamps) [lm]	P [W]
1	6	OCTA-LIGHT PLC OCTL-OLS-30-RNWR (1.000)	3040	3100	28.0
Total:			18239	18600	168.0

Specific connected load: $6.33 \text{ W/m}^2 = 1.43 \text{ W/m}^2/100 \text{ lx}$ (Ground area: 26.56 m^2)